

ACADEMIC YEAR 2025-26

# MORE THAN A DEGREE a path to **Healthcare Leadership**

PG Diploma in Healthcare Management (Online)



**IIM Sirmaur**  
Executive Alumni  
Status

**Top Faculty**  
From IIM Sirmaur  
and Top Industry  
Leaders

**Placement Support**  
Top Industry  
Tie-Ups for your  
Career

# PG Diploma in Healthcare Management

## Course Overview

The PG Diploma Program in Healthcare Management is designed to provide a rigorous and integrated approach to develop managerial, analytical, and leadership skills essential for roles in healthcare organizations and hospitals. The program blends foundational management knowledge with specialized healthcare administration training, culminating in experiential learning to prepare graduates for complex decision-making and leadership within the healthcare sector.

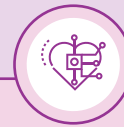


## Course Objectives



### › Develop Healthcare-Specific Management Competencies

Equips students with essential management skills for finance, operations, HR, and strategy in healthcare.



### › Enhance Analytical and Technological Proficiency

Trains students in data-driven decision-making and modern healthcare technologies to enhance efficiency.



### › Foster Ethical Leadership and Patient-Centric Management

Instills ethics and commitment to patient-centered care, prioritizing quality, safety, and equitable management.



### › Hands on Training & Practical Learning

Enhancing Learning Through Campus Immersion, Practical Skills, and Real-World Healthcare Management

## Eligibility

**Healthcare-Specific Bachelor's Degree:** Applicants must hold a healthcare-related bachelor's degree from a recognized university. Eligible fields include:

- ✔ **Medical Degrees:** MBBS, BDS, BAMS, BHMS, BUMS, or equivalent.
- ✔ **Nursing:** BSc Nursing, Post BSc Nursing.
- ✔ **Biological Sciences:** BSc in Microbiology, BioTechnology, or equivalent.
- ✔ **Allied Health Sciences:** Degrees in fields such as Pharmacy (BPharm), Physiotherapy (BPT), Occupational Therapy, and other allied health professions.

**Minimum Academic Requirement:** Candidates must have achieved at least **50%** aggregate marks in their bachelor degree.

## Who is this course for?

### › Healthcare Professionals and Hospital Administrators

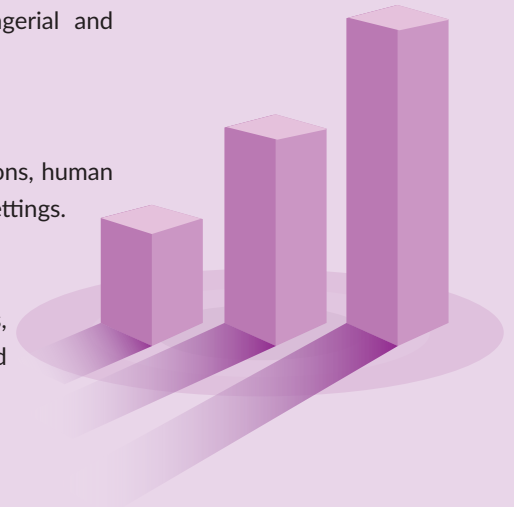
Current hospital administrators, healthcare managers, doctors, and professionals from allied sectors within the healthcare value chain who seek to enhance their managerial and operational expertise.

### › Mid-Career Professionals and Experienced Graduates Seeking Growth

Equip students with essential management skills in areas such as finance, operations, human resources, and strategic planning, tailored specifically for healthcare and hospital settings.

### › Develop Healthcare-Specific Management Competencies

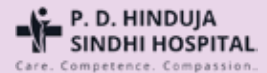
Equip students with essential management skills in areas such as finance, operations, human resources, and strategic planning, tailored specifically for healthcare and hospital settings.



## Career Progression After the Course



## Top Employers



## Curriculum

### Trimester 1

#### Foundations of Management in Healthcare

- › Principles of Management
- › Healthcare Systems & Policy
- › Financial Accounting and Analysis
- › Organizational Behavior

### Trimester 2

#### Core Healthcare Management

- › Hospital Operations and Planning
- › Quality & Patient Safety Management
- › Healthcare Marketing and Patient Care
- › Introduction to Digital Health

### Trimester 3

#### Strategic Applications and Industry Immersion

- › Strategic Management in Healthcare
- › Public Health and Emergency Preparedness
- › Digital Transformation and Product Management in Healthcare
- › Capstone Project

## Course Fees

Application Fees	₹ 2,000
Course Fee	₹3,50,000
Alumni Registration Fee	₹10,500 (Optional)

## Financing

With the recognition of NSDC the candidates pursuing this course are eligible for a collateral free loan for the course

## Admission Process

Follow the below 6 simple steps to secure your seat in the program



# Academic Partners

The program is offered by IIM Sirmaur in collaboration with NSDC, this program brings together two premier institutions renowned for skilling and job-ready upskilling.

## IIM Sirmaur



IIM SIRMAUR  
KNOWLEDGE . LEADERSHIP

- Established in 2015, IIM Sirmaur is a Centrally Funded Institution of National Importance under the Ministry of Education, Government of India.
- Located in Himachal Pradesh, it offers MBA, Executive Programs, PG Diploma Programs, and Ph.D. Programs with a focus on quality education and ethical leadership.
- Known for its rigorous curriculum, industry collaborations, and emphasis on holistic development, social responsibility, and global excellence.
- Hosts a diverse community of students and faculty, fostering an environment of innovation, critical thinking, and leadership development.



## From the Director's Desk

*"Partnering with NSDC and Emversity allows us to bridge the gap between strategic management insights and hands-on skill development. At IIM Sirmaur, we believe in shaping leaders who not only excel in boardrooms but also understand the transformative power of skilled human capital in driving innovation and inclusive growth. This program is a testament to our shared vision of empowering individuals to create a sustainable and prosperous future for India"*

**Professor Prafulla Y. Agnihotri**

Director, IIM Sirmaur

“



# Academic Partners

The program is offered by IIM Sirmaur in collaboration with NSDC, this program brings together two premier institutions renowned for skilling and job-ready upskilling.

## NSDC



- › Established in 2008, NSDC is a Public-Private Partnership under the Ministry of Skill Development & Entrepreneurship (MSDE).
- › Focused on empowering India's youth, it supports skill development through vocational training, funding, and strategic partnerships.
- › As the key implementation partner of the Skill India Mission, NSDC builds a robust ecosystem for futuristic skills and industry-ready workforce development.
- › Collaborates with international organizations and industries to benchmark global standards and promote opportunities for Indian talent abroad.



## From the CEO's Desk

*"This collaboration between NSDC, IIM Sirmaur and Emversity represents a unique synergy of industry-focused skill development and world-class management education. Together, we aim to empower future leaders with the tools to drive innovation, foster sustainable growth, and create a transformative impact on India's economic landscape."*

**Ved Mani Tiwari**  
CEO, NSDC



“

# About Emversity

Emversity is a higher education platform that offers employment-oriented programs in association with leading healthcare companies and top-rated universities. We aspire to train 1,00,000 skilled professionals for the healthcare sector across the globe by 2030.

## Our Offerings: 2 Schools, 15+ Programs



### Healthcare Management Programs

Online/University Campus

- › 1 Year (Online) & 2 Year (Offline) Healthcare Management Programs for future leaders-
- › Management expertise from top business schools along with strong industry connects

### 4-year EDGE Degree Programs

Partner University Campus

- › 4-year program (3 years *on-campus* + 1 year *on-job* training with stipends)
- › A UGC-recognised B.Sc. (Hons.) degree from a top university
- › Ideal to study in-depth and research, experience campus life, work abroad

### 3-year SMART Degree Programs

Emversity Campus

- › 3-year program (1 year *on-campus* + 2 years *on-job* with stipends)
- › A UGC-recognised B.Voc. degree
- › Ideal to start earning early on, with high ROI / 'value for money'



### Upskilling for Nurses (B.Sc. Nursing / GNM)

- › 3-month bridge program with placement in top Indian and international hospitals
- › Training on technical skills, bedside manner, language, licensure exams and interview

## The Emversity Mission

*"Our mission is to play a pivotal role in making India the de facto supplier of skilled workforce to the globe by 2030. While we achieve this goal, we also want to become synonymous with 'excellence & quality', and not just a destination for 'lower wages'."*

**Vivek Sinha**  
Founder & CEO

“



# Program Directors

Dr. Kiran Kumar Paidipati and Dr. Manish Sarkhel are Program Directors at IIM Sirmaur, specializing in Operations Management, Analytics, Decision Sciences, and Healthcare Management. With extensive academic and industry expertise, they lead innovative programs tailored for professionals and organizations.

## Dr. Kiran Kumar Paidipati

- Dr. Kiran Kumar Paidipati is an Assistant Professor in Decision Sciences at IIM Sirmaur and Chairperson of CHMI, with over a decade of teaching and research experience.
- He holds a PhD in Statistics from Pondicherry University and previously served as an Assistant Professor at Lady Shri Ram College, University of Delhi.
- His expertise spans Statistics, Operations Research, Stochastic Modeling, and Data Science, including Predictive Analytics, Machine Learning, and Deep Learning.



## Dr. Manish Sarkhel

- Dr. Manish, Assistant Professor at IIM Sirmaur, holds a PhD from IIM Indore and has taught at leading institutions including XIMB, TAPMI, Woxsen, and IIM Amritsar.
- His expertise spans Operations & Supply Chain Management, Project Management, Python, and Data Analytics.
- With prior experience in Engineering, Procurement, and Construction, he specializes in automating material handling for steel plants and consults on traffic, energy management, and analytics.



# Program Highlights

## Management Expertise and Industry Insights



- Delivered by top faculty from IIM Sirmaur, ensuring excellence in management education.
- Industry-relevant modules taught by experienced professionals from Emversity.
- Combines academic rigor with practical healthcare industry insights.

## Blended Campus Experience

- Optional IIM Sirmaur alumni status for lifelong professional connections.
- 7-day campus immersion at IIM Sirmaur to network and participate in workshops.
- Placement assistance with strong industry tie-ups for career advancement.



## Get IIM Standard Education



- Specially designed for working professionals
- Become a part of the IIM Sirmaur Executive Alumni network and events
- Industry connects with Top Healthcare Organisations



# Spotlight on Emversity



## THE ECONOMIC TIMES

Former Unacademy COO raises \$11 million from Matrix, Lightspeed for new edtech venture

Platform: Economic times

[Read Now](#)

3 mins

**Outlook**  
BUSINESS + MONEY

**ZEEBUSINESS**

**Startup**  
**STORY**

**moneycontrol**  
मार्केट की धड़कन

**VCCIRCLE**

## MoU Signed with Top Universities

Emversity has partnered with multiple universities like Malla Reddy University, Hyderabad, Arka Jain University, Jamshedpur, Yenepoya University, Bangalore, and IIM Sirmaur to offer top quality training in healthcare





**Take the first step  
towards a rewarding  
career!**



**Talk to a counsellor  
80 80 80 49 80**

 [www.emversity.com](http://www.emversity.com) | [emversity /](#)   

**Bengaluru | Hyderabad | Delhi NCR | Ranchi | Kochi | Nagpur | Jamshedpur**